

100

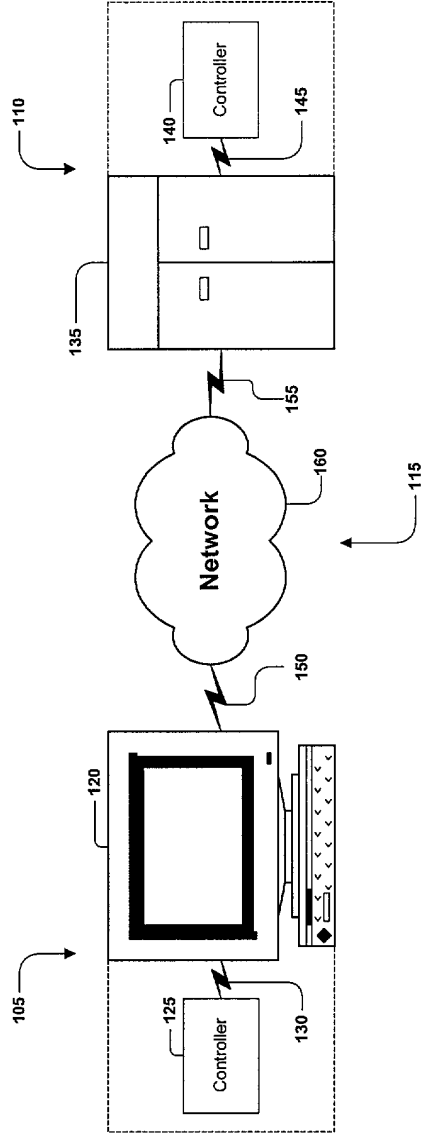


Fig. 1

FIG. 2 is a block diagram of a system 200. The system 200 includes a computer system 270, a network 250, and a controller 240. The computer system 270 includes a CPU 282, a communication device 284, a TV tuner 286, and an input/output (I/O) device 288. The computer system 270 also includes a memory 272, which contains an operating system 274, one or more authoring applications 276, one or more client applications 278, and one or more browser applications 280. The network 250 is connected to the computer system 270 and the controller 240. The controller 240 is connected to the network 250 via a communication device 235. The system 200 also includes a display 295, a TV remote 296, a video camera 298, an audio speaker 298, a keyboard 294, a PDA 293, a mouse 291, and a mobile phone 282. The system 200 is connected to a network 215 via a network 250.

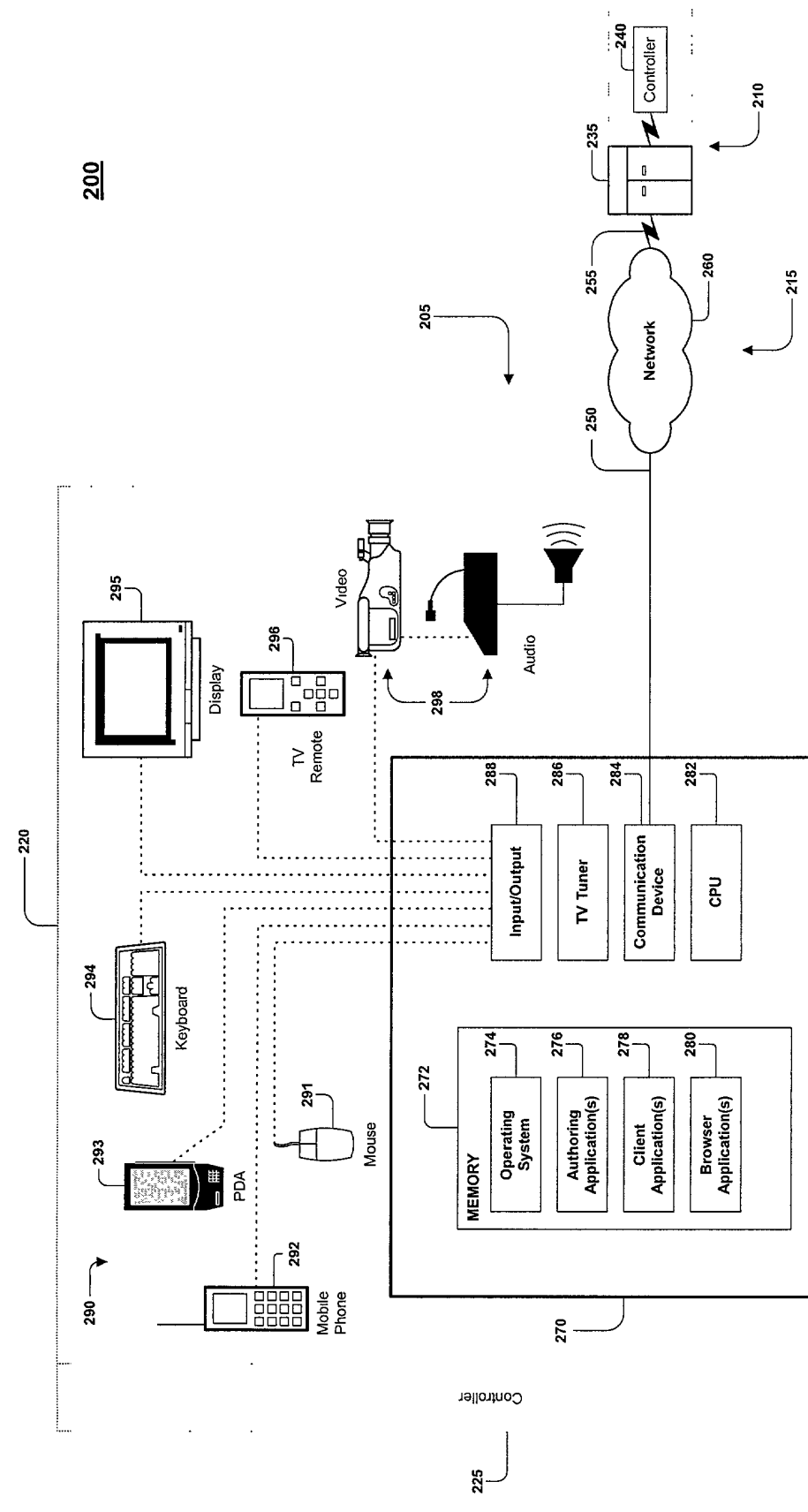


Fig. 2

FIG. 3 is a block diagram of a network architecture 300. The architecture includes a Controller 325 connected to a Host Complex 320. The Host Complex 320 is connected to a Network 360. The Network 360 is connected to a Server 370. The Server 370 is connected to an OSP Host Complex 380 and an IM Host Complex 390. The OSP Host Complex 380 and the IM Host Complex 390 are connected to a Controller 340. The architecture is labeled 310 and 335.

300

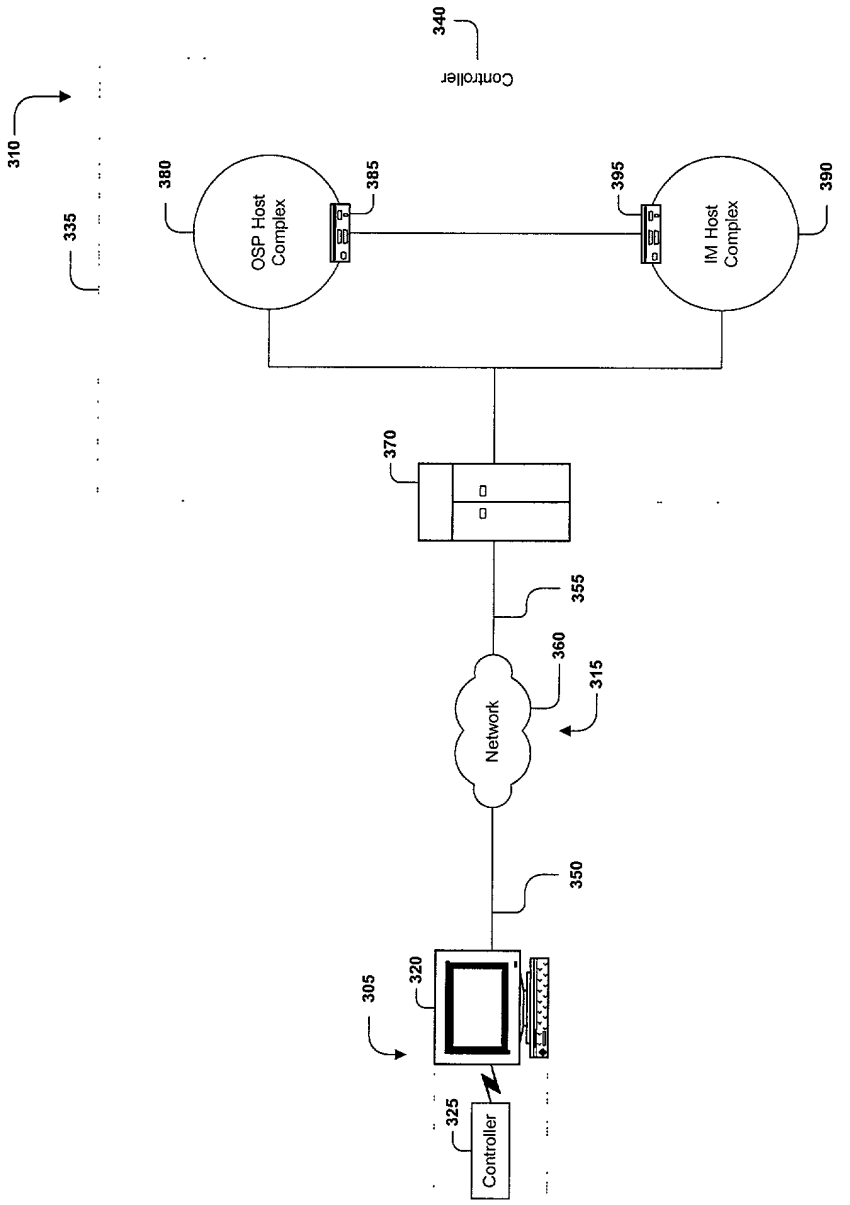


Fig. 3

FIG. 4 is a block diagram of a network system 400. The system includes a Controller 425, a Network 470, a Login server 460, a Routing Processor 4802, a Local Server 4804, a Proxy Server 4806, an Internet 485, and an IM Host Complex 490. The Controller 425 is connected to the Network 470. The Network 470 is connected to the Login server 460, the Routing Processor 4802, and the Internet 485. The Routing Processor 4802 is connected to the Local Server 4804 and the Proxy Server 4806. The Local Server 4804 and the Proxy Server 4806 are connected to the Internet 485. The Internet 485 is connected to the IM Host Complex 490. The IM Host Complex 490 is connected to the Internet 485. The system is controlled by the Controller 425.

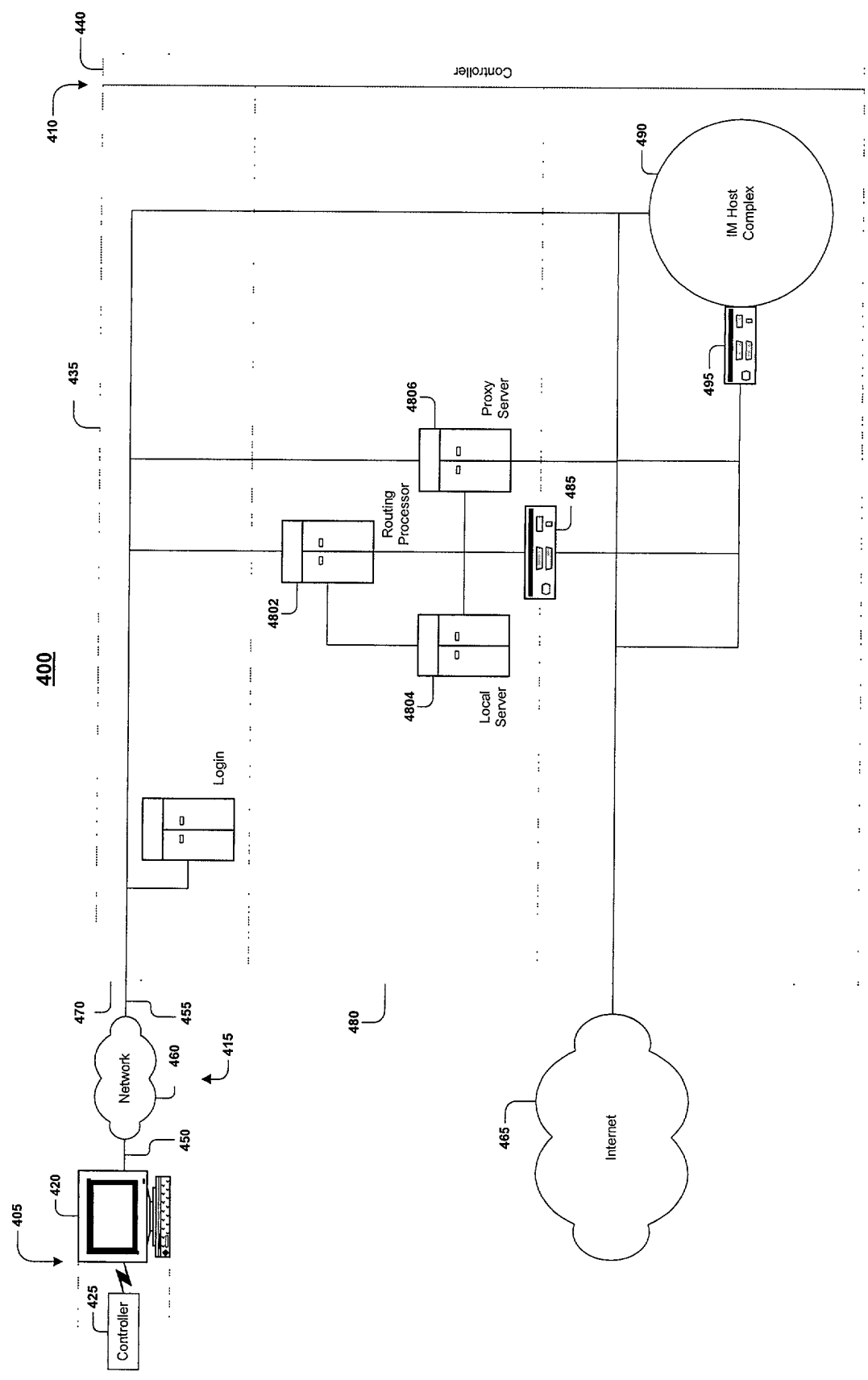


Fig. 4

500

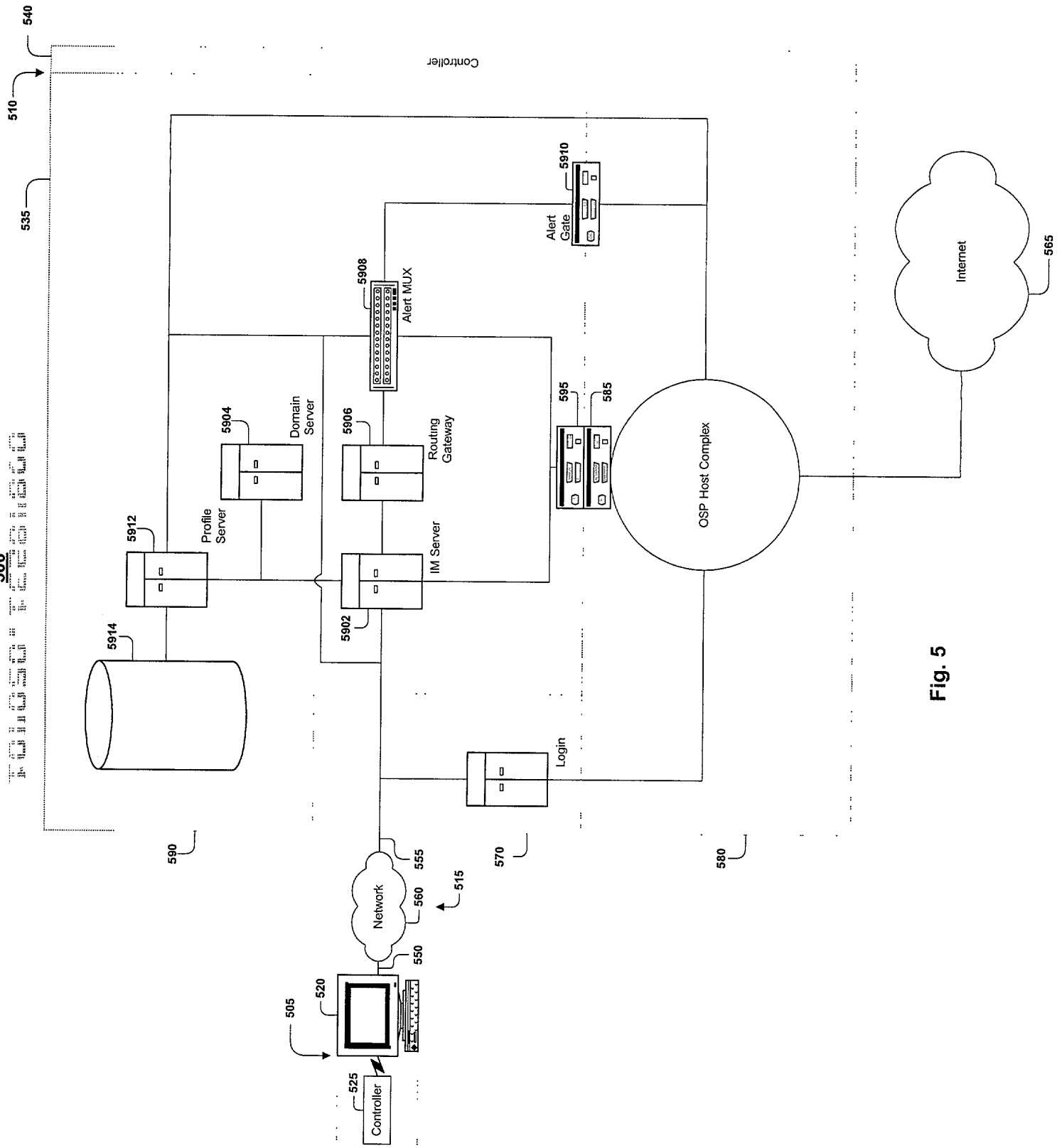


Fig. 5

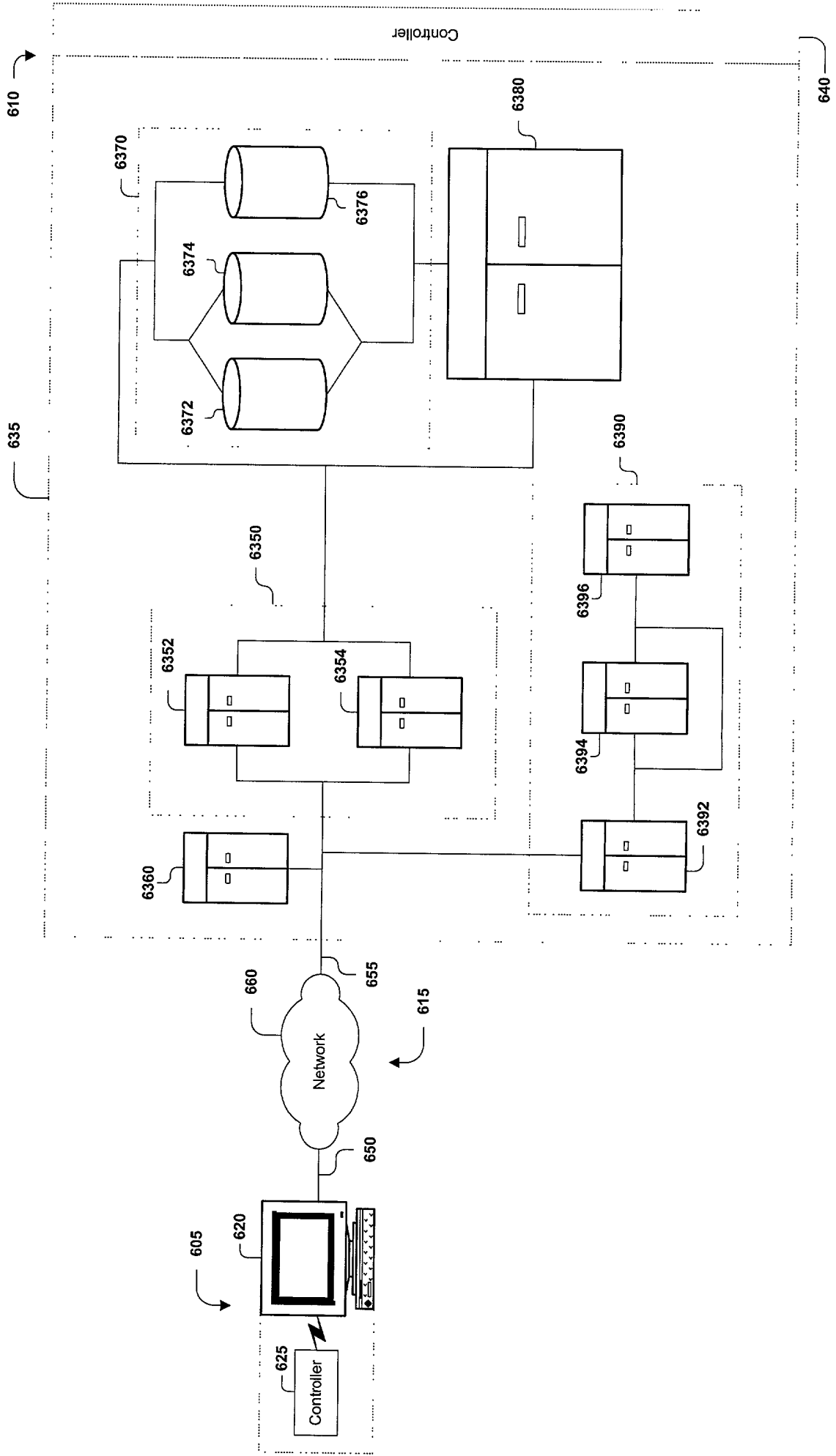


Fig. 6

700

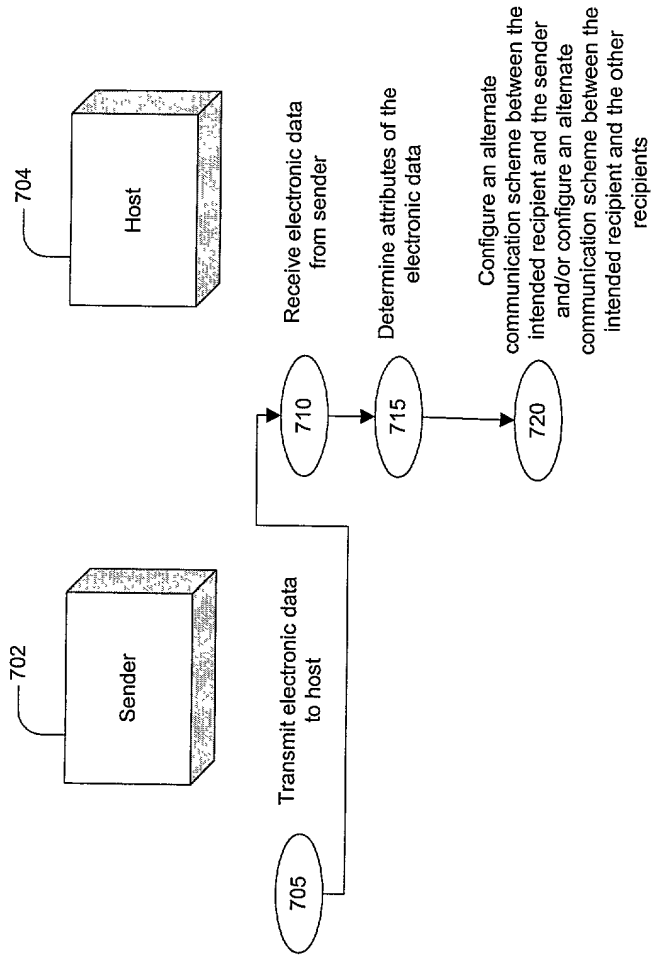
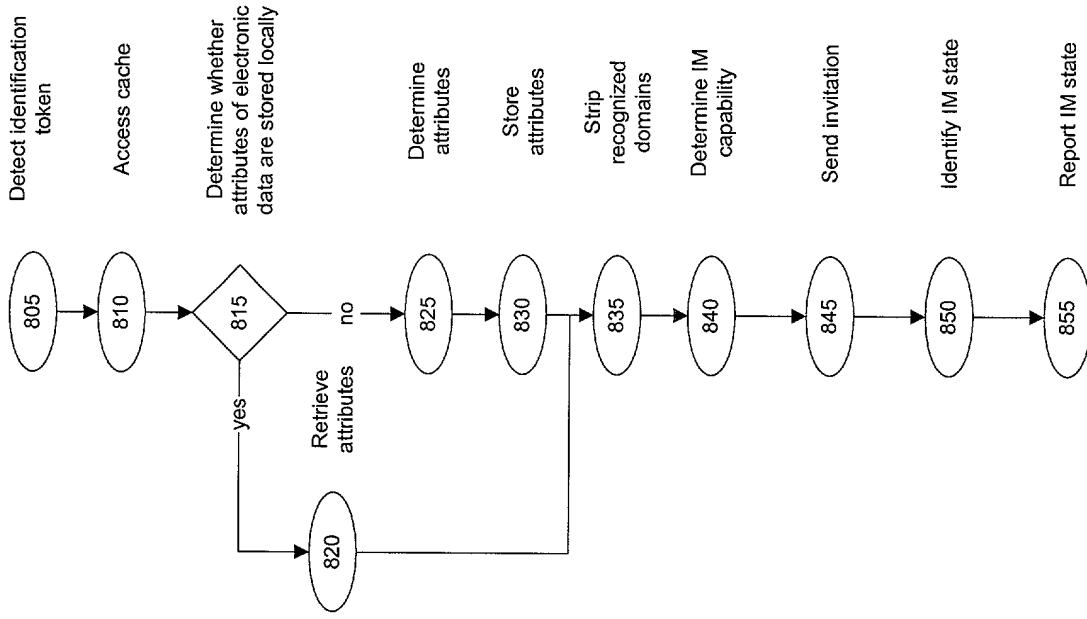


Fig. 7

800



**Fig. 8**



900

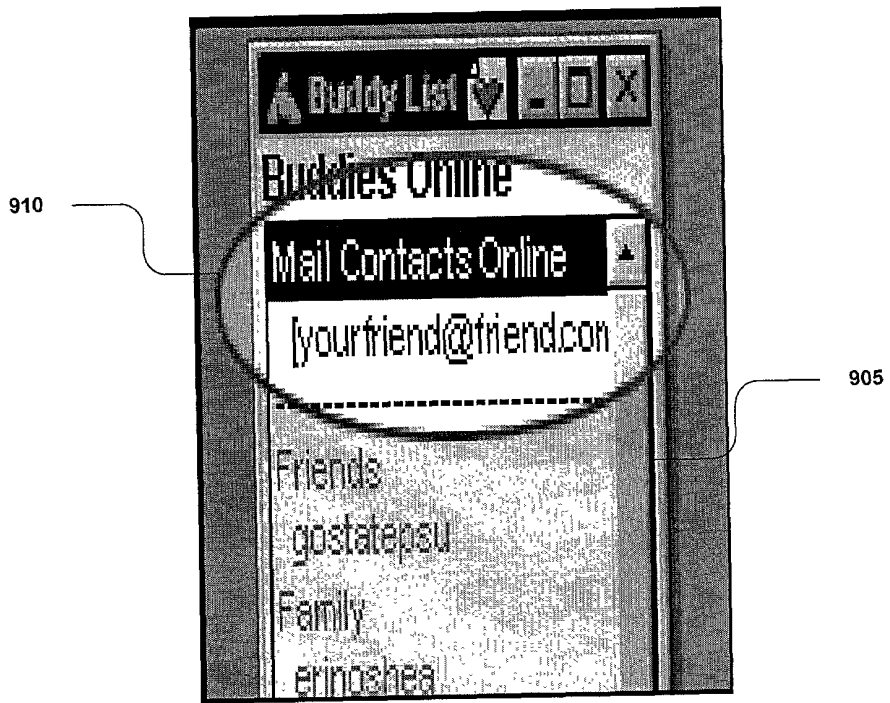


Fig. 9

Inbox: messages

Sent Mail

<< Previous | Next >>

Get Mail Write Mail | Reply Reply All Forward Delete

Subject: Baby pictures

Date: Wed, 01 Sept 1999 17:22:0700

From: cbarker@asia.com (Chris Barker)

To: alisa@netscape.com (Alisa Evans), jsruh@aol.com (John Ruh),  
choysauce@aol.com (Dino Paxinos), sallysmith@stratsight.com (Sally Smith),  
bmaylor@aol.com (Brad Maylor)

Attachment:

Dino,

The photos are now on my Web site. Check them out at www.members@aol.com. Under the family gallery button. Under the family gallery button. The photos are now on my Web site. Check them out www.members@aol.com Under the family gallery button Under the family gallery button.  
Alisa

Get Mail Write Mail | Reply Reply All Forward Delete

<< Previous | Next >>

Launch Instant Message to bmaylor

Person is Online

AIM Mail - Netscape

cbarker@asia.com (Chris Barker)

Send an Instant Message

Add to Buddy List

Send an E-mail

Person is Offline

AIM mail - netscape

choysauce@aol.com (Dino Paxinos)

Send an E-mail

Person is not an AIM user

AIM Mail - Netscape

sallysmith@stratsight.com (Sally Smith)

Send an E-mail

Invite to use AIM

Fig. 10

FIGURE 10